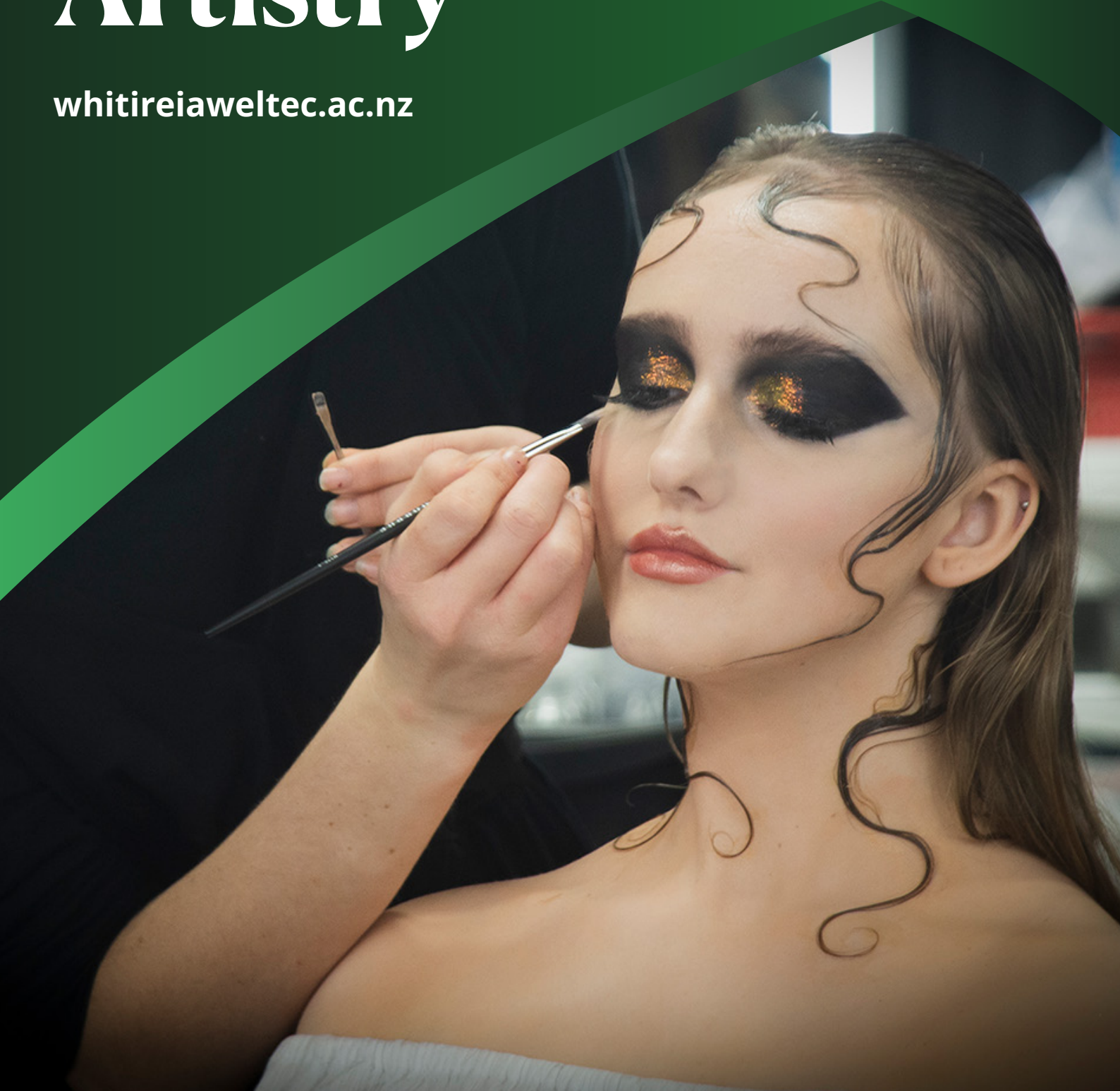


# Makeup Artistry

[whitireiaweltec.ac.nz](http://whitireiaweltec.ac.nz)





'You get to meet the most incredible, creative people.'

# Serena



Makeup Artistry



Makeup & Special Effects Artist

Serena had never thought of makeup as the career for her until she went to a WelTec open day. One of the special effects tutors created a prosthetic wound on her forehead, and Serena managed to convince all her friends it was real. "Seeing those skills modelled in front of me made my decision to study at WelTec easy."

Once at WelTec, she was met with passionate tutors who were always willing to engage and answer questions. Serena found it easy to get along with them, which made time in class always enjoyable.

Serena studied at the WelTec's Wellington City campus - Te Kāhui Auaha, a creative campus filled with students studying dance, music, performing arts and more. This offered opportunities to collaborate with other programmes, like film, where Serena could practice her skills on aspiring actors.

Serena's now a freelance Makeup and Special Effects Artist, keeping herself busy with all sorts of projects, from films, commercials, weddings, and even working with the New Zealand Military.

Serena's interest in makeup started with her love of film, where she noticed how important a role

makeup played. Being able to work on a film set and meet the incredible people working on them feels like a dream come true for her. "Some of the projects I have worked on include Avatar, Mr Corman, a Keith Urban music video, Antipodes, NZ series The Māori Sidesteps, World of Wearable Art, and so many more!"

Serena's work has taken her to some unexpected places, like training days for the New Zealand Military. She helps to simulate an environment that could occur in real-life deployment, by adding prosthetic wounds to actors.

Serena credits WelTec for getting her to where she is today. The skills she learnt, combined with the experience and connections of her tutors helped her crack into the industry and land her first job.

Follow the QR code below to read Serena's full story.



# New Zealand Certificate in Makeup and Skin Care (Introduction) (Level 3)

📖	Level 3
🕒	17 weeks, full-time
💰	\$3,500 (indicative for 2023 intake)
🌐	\$12,362* (indicative for 2023 intake)

Take your passion to the next level and become a part of the growing beauty industry. Learn practical skills from skincare and maintenance through to classic and trending makeup looks. Gain an introduction to basic beauty services, communication, professionalism and sales strategies.

## What you will learn

- Prepare the face for long-lasting makeup application
- Carry out day, evening and special occasion makeup looks
- Client consultation, to establish needs and determine makeup or skin care service
- Identify symptoms of skin conditions to advise clients of future implications and possible treatments
- Gain product knowledge of cosmetics and skincare
- Customer service and communication skills
- Retail and promotion skills for makeup and beauty sales
- Personal presentation for the beauty industry
- Industry health, safety and hygiene principles

## Flexible study options

This programme offers the flexibility to be completed around work or other life commitments. Classes will be held at the following times and locations:

Te Kāhui Auaha campus: Mondays-Wednesday 9:00am-4:30pm

Petone campus: Mondays-Wednesday 9:00am-4:30pm

## Career options

- Beauty consultant

- Makeup artist
- Makeup counter salesperson

## Entry requirements

### Domestic

NCEA Level 1 or evidence of equivalent skills and knowledge.

### International Students

Find your country's [equivalent academic entry requirements here](#)

*\* International fees shown here do not include insurance and administration (currently approximately \$924 per year of study)*

## Course related costs

### Equipment/material requirements:

- WelTec specialist basic makeup and skincare kit (includes basic kit, professional brush set and Te Auaha T-shirt) Approx \$374
- Stationary equipment
- Suitable clothing complying with programme dress code (full professional black clothing)
- Students will have to organise/provide suitable models, as instructed by tutor, for all practical work.
- Study material/ textbook. Price approx. \$60

These course related costs are not covered under any fees free funding schemes. To apply for course related costs (as a loan) visit [studylink](#).

Ākonga who qualify for the MPTT (Māori and Pasifika Trades Training) scholarship may be able to have their course related costs covered.

## Related study options

[New Zealand Certificate in Makeup Artistry \(Level 4\)](#)

[New Zealand Certificate in Beauty Therapy \(Level 4\)](#)

Disclaimer: The information contained in this document is correct at the time of print. Whitireia and WelTec | Te Pūkenga reserves the right to cancel or postpone any of the programmes, and shall not be liable for any claim other than the proportion of programme fees that the cancelled portion bears. Some programmes may be dependent upon formal approval from NZQA (New Zealand Qualifications Authority), TEC (Tertiary Education Commission) funding allocation, and the number of enrolments. As part of the NZQA targeted review of all Level 1-6 New Zealand qualifications, there may still be changes to some programmes starting in 2024. Fees, programmes, entry and selection criteria, and dates, are subject to change. Please check the relevant programme pages at [whitireiaweltec.ac.nz](http://whitireiaweltec.ac.nz) for up-to-date information and full entry regulations before applying to enrol. Information regarding English language requirements is available on each course page at [whitireiaweltec.ac.nz](http://whitireiaweltec.ac.nz).