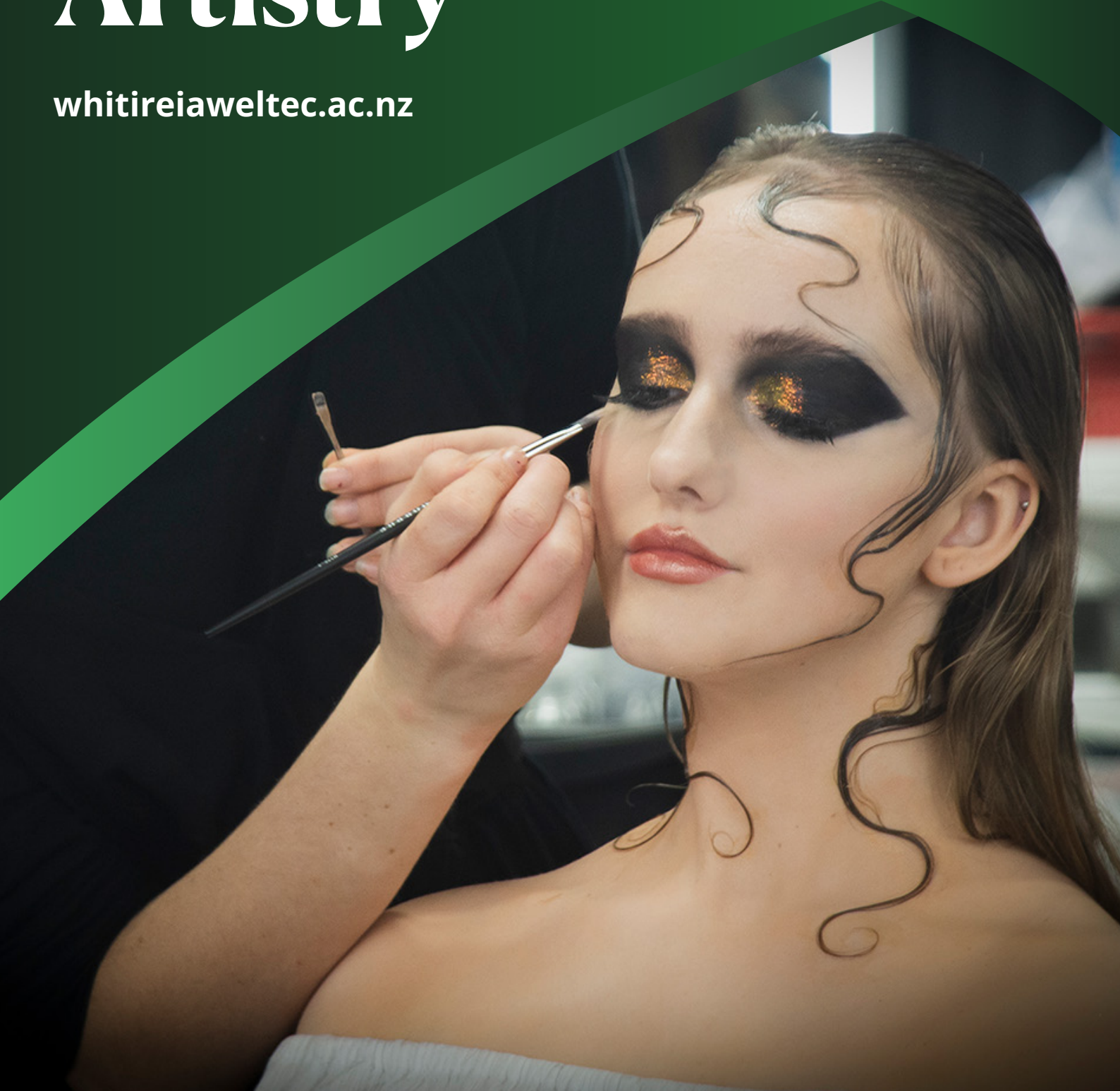


# Makeup Artistry

[whitireiaweltec.ac.nz](http://whitireiaweltec.ac.nz)





'You get to meet the most incredible, creative people.'

# Serena



Makeup Artistry



Makeup & Special Effects Artist

Serena had never thought of makeup as the career for her until she went to a WelTec open day. One of the special effects tutors created a prosthetic wound on her forehead, and Serena managed to convince all her friends it was real. "Seeing those skills modelled in front of me made my decision to study at WelTec easy."

Once at WelTec, she was met with passionate tutors who were always willing to engage and answer questions. Serena found it easy to get along with them, which made time in class always enjoyable.

Serena studied at the WelTec's Wellington City campus - Te Kāhui Auaha, a creative campus filled with students studying dance, music, performing arts and more. This offered opportunities to collaborate with other programmes, like film, where Serena could practice her skills on aspiring actors.

Serena's now a freelance Makeup and Special Effects Artist, keeping herself busy with all sorts of projects, from films, commercials, weddings, and even working with the New Zealand Military.

Serena's interest in makeup started with her love of film, where she noticed how important a role

makeup played. Being able to work on a film set and meet the incredible people working on them feels like a dream come true for her. "Some of the projects I have worked on include Avatar, Mr Corman, a Keith Urban music video, Antipodes, NZ series The Māori Sidesteps, World of Wearable Art, and so many more!"

Serena's work has taken her to some unexpected places, like training days for the New Zealand Military. She helps to simulate an environment that could occur in real-life deployment, by adding prosthetic wounds to actors.

Serena credits WelTec for getting her to where she is today. The skills she learnt, combined with the experience and connections of her tutors helped her crack into the industry and land her first job.

Follow the QR code below to read Serena's full story.



# New Zealand Certificate in Makeup Artistry (Level 4)

📖	Level 4
🕒	1 year, full-time
💰	\$8,850 (indicative for 2023 intake)
🌐	\$22,724* (indicative for 2023 intake)

Learn fashion makeup and hairstyling for the runway, editorial and private clients. Study special effects, including character design, facial manipulation, ageing, wig styling, trauma effects and body art. Gain valuable business and creative collaboration skills. Get opportunities to gain industry experience in different projects offered.

## What you will learn

- Day makeup, fashion makeup, runway makeup and accompanying hair-styling techniques
- Editorial/photographic makeup and styling
- Character/period makeup and styling
- Special effects makeup and body painting
- Character and aging makeup and hair applications
- Male makeup
- Wig and prosthetic application, facial hair trimming and application
- Portfolio development
- Business skills, practice professionalism and customer service

Check out the [Te Auaha Makeup Instagram](#) for examples of student work.

## Flexible study options

This programme offers the flexibility to be completed around work or other commitments. Classes will be held Tuesday's to Thursday's 9:00am-4:30pm at the Te Kāhui Auaha campus.

## Career options

Work as a makeup artist or counter salesperson at cosmetic companies and department stores. Enter the creative industries and work in film and TV, stage production or on photo shoots.

- Makeup artist
- Makeup counter salesperson
- Fashion makeup artist
- Film makeup artist
- Stage makeup artist

## Entry requirements

### Under 20

NCEA level 2, or above

### 20+

If you're 20 years or over, you may qualify for special admission on this programme. Contact us if you don't meet the entry criteria as provided on the Under 20 information.

All students will be required to have a makeup kit and digital camera for photographic work.

### International students

Minimum IELTS (academic) score of 5.5 with no band score lower than 5.

Find your country's [equivalent academic entry requirements here](#)

*\*International fee displayed is for 1 year of study (equivalent to 120 credits) and does not include insurance and administration (approximately \$924 per year of study).*

## Course related costs

- WelTec specialist makeup, hair kit (SFX and fashion products and tools) and study material/ textbook. Price approx \$1000
- A digital camera is preferred if you don't have a high quality camera on your phone
- Craft and stationary equipment
- Suitable clothing complying with programme dress code (full professional black clothing)
- Students will have to organise/provide suitable models, as instructed by tutor, for all practical work.

These course related costs are not covered under any fees free funding schemes. To apply for course related costs (as a loan) visit [studylink](#).

Disclaimer: The information contained in this document is correct at the time of print. Whitireia and WelTec | Te Pūkenga reserves the right to cancel or postpone any of the programmes, and shall not be liable for any claim other than the proportion of programme fees that the cancelled portion bears. Some programmes may be dependent upon formal approval from NZQA (New Zealand Qualifications Authority), TEC (Tertiary Education Commission) funding allocation, and the number of enrolments. As part of the NZQA targeted review of all Level 1-6 New Zealand qualifications, there may still be changes to some programmes starting in 2024. Fees, programmes, entry and selection criteria, and dates, are subject to change. Please check the relevant programme pages at [whitireiaweltec.ac.nz](http://whitireiaweltec.ac.nz) for up-to-date information and full entry regulations before applying to enrol. Information regarding English language requirements is available on each course page at [whitireiaweltec.ac.nz](http://whitireiaweltec.ac.nz).